

GRAPEVINE, TEXAS

— *Historic Downtown* —
WALKING TOUR





The City of Grapevine extends to you a warm Texas welcome as you take a few minutes to leisurely explore the Main Street Historic District. By utilizing this new brochure you will be introduced to over 50 buildings and their architectural descriptions as well as stories, events and people who contributed to the development of our town. The walking tour begins on the east side of Main Street and proceeds northward for six blocks, then crosses to the west side of the street and returns southward to the Depot. We hope you will enjoy Main Street which is listed on the National Register of Historic Places.

This brochure, written by members of the Grapevine Historical Society and produced by the Grapevine Convention & Visitors Bureau, reflects the warm spirit of cooperation that enabled early citizens of Grapevine to successfully settle here, conduct and grow their businesses and build a strong town. Founded in 1844, Grapevine is the oldest community in Tarrant County. In 1888, when the Cotton Belt Railroad came to Grapevine, businesses flourished and the wooden buildings on Main Street were replaced with new structures constructed of locally-made brick. At least 80 percent of the commercial buildings you will see date from that period. In 1907, Grapevine was incorporated as a city and many important services were initiated for the community of 500 people. Today, Grapevine is an amazing city of nearly 50,000 people. Grapevine has received accolades for its superb quality of life and for the many festivals and events held here throughout the year. In 2012, the International Festivals & Events Association named Grapevine as a "World Festival & Event City."

Founded in 1844,
Grapevine is the
oldest community
in Tarrant County.

Whether your stay here is long or short, Grapevine's events, unique retail shops, restaurants, beautiful historic buildings and hospitality will make your experience memorable. We welcome you and hope you enjoy your walking tour. Please come back again soon!

Sincerely,

WILLIAM D. TATE | MAYOR



1

COTTON BELT RAILROAD DEPOT

701 S. MAIN ST.



The 1888 Grapevine Cotton Belt Railroad Depot is one of Grapevine’s most important buildings. It was operated by the St. Louis Southwestern Railway (also known as the Cotton Belt Route) until 1972 when the station was closed. Through the efforts of the Grapevine Garden Club, the Depot was saved from demolition and moved to Heritage Park at Ball and Wall Streets where it remained for 20 years. In 1972, the Grapevine Historical

Society was organized to utilize the Depot building for a new museum to preserve Grapevine’s unique history and heritage. Twenty years later, the Depot and the Grapevine Historical Museum moved back to Main Street near the railroad tracks on land that is now called the Heritage Center. The Depot is the ticketing site of the Grapevine Vintage Railroad. Several historic buildings with historical markers and several well known artists who offer demonstrations and classes are located on the Heritage Center property.



2

COMING HOME STATUE

705 S. MAIN ST.

This two-piece bronze sculpture created by artist Michael Pavlovsky depicts a soldier returning from service to a loving embrace. The arch bears symbols of military branches of service and faiths. The faces in the seashells on the arch represent soldiers’ experiences in exotic lands. A watch without a face depicts how time can stand still when a loved one is far from home. *Coming Home* was dedicated on Memorial Day 2000.



3

A.J.’s ON MAIN

651 S. MAIN ST.



In 1891, Johnny Wallis built a brick hotel here for his sister, Susan Wallis Terrill, to operate. Constructed near the railroad depot, it offered comfortable lodging for visitors and salesmen who at that time were called “drummers” (see entry 20). In the late 1940s and into the 1950s, this was the site of the town’s Trinity 2 water well. Adjacent to the artesian well were a ground storage tank and a small red brick facility from which the water was pumped into the Grapevine water works system. With the opening of Lake Grapevine in 1952, a new source of water was provided. On adjacent property to the north was a frame building used for the Soil Conservation Service (SCS) office. The SCS was an educational organization to help farmers prevent soil erosion. Farther north was a structure of similar design used as a residence. The buildings were moved but are still in use in Grapevine.



4

RUGS, FLOORS AND MORE; CASSIE’S FROZEN YOGURT; SCENTCHIPS/GYPSY LANE; MAIN STREET JEWELRY; CROWNED BY GRACE; LITTLE ORANGE FISH; WEINBERGER’S DELICATESSEN 603 TO 601 S. MAIN ST.



Over the years several houses, grocery stores and businesses occupied the area from College Street to the railroad tracks. The houses were moved to other sites in town and the markets transitioned from “Big Razz and the Mad Butcher Grocery” to “Buddies Supermarket” to “Winn-Dixie.” In the late 1990s the grocery was closed, but the “box” structure remained. The building was adapted for office use. A new series of buildings was added in the parking lot to complement the rest of historic Main Street. Preservation of historic structures, adaptive reuse of existing buildings and compatible infill are hallmarks of the National Main Street Program that Grapevine has participated in since 1984.

5

SUNDAY SKATERS
601 S. MAIN ST.

The three skaters portrayed in this statue were designed from photographs of three children who grew up in Grapevine during the 1920s and 1930s as well as a pet dog that used to run free in those times. The children's names were, from front to back, Mary Virginia, J.E. and Dorothy Bess. The children lived in Grapevine their entire lives. Skates were low-tech in those days. A skate key was used to tighten the skates to the soles of the children's shoes and no one thought of wearing pads or helmets. *Sunday Skaters* was created by Archie St. Claire and was dedicated in September 2006.



6

J. E. FOUST & SON FUNERAL HOME
523 S. MAIN ST.

Originally constructed around 1870, the two-story J.E.M. Yates home was transformed into the residence for the Foust family and the Foust Funeral Home in 1945. In 1963, the exterior was bricked and columns were added to dress up the frame house. Until 2007, when residential units at 925 Main opened at Dallas Road and Main Street, the Fousts were the last family to reside on South Main Street.



7

TOLBERT'S RESTAURANT
423 S. MAIN ST.

Tolbert's Restaurant occupies the southern-most portion of this three-part building. Like the 1911 Robinson's Mercantile that occupied all three portions, Guest Furniture & Antiques filled all three buildings from the 1970s to 1990s. In the 1930s, Grapevine's



first washateria, the "Help-U-Self," opened on Main Street. A skating rink opened here in the late 1940s. The Woodmen of the World hall once occupied a second story and was the largest meeting hall in town. It was used for recitals, band concerts, graduations and community activities. The second floor was removed in 1944 after a fire, and the lumber was recycled to build a home at 528 S. Dooley St.



8

CLOSET TREASURES
421 S. MAIN ST.

E. E. Lowe owned one of the first Ford dealerships on Main Street. In subsequent year, several feed stores operated here and a cream separator was available here for people who owned a family cow and needed to separate cream from the milk.



9

BEYOND THE RED DOOR; COYOTE COWBOY 419 & 417 S. MAIN ST.



This building was the northern-most portion of a three-part connected building and was a place for the men of the community to gather. The building was built in 1911 for Robinson's Mercantile business. Later, H.L. Peterson's Farmall tractor dealership occupied the space. In the 1930s, the building was used as a Works Progress

Administration (WPA) sewing room. In the late 1940s and early 1950s, Frank Thweatt operated the Grapevine Recreational Hall, a pool hall with additional tables for playing dominoes, which again gave Grapevine men a place to gather.



10

BELLA BUTTERFLIES 415 S. MAIN ST.

In the early days of Grapevine, local entrepreneurs provided utility services such as electricity, water and phone service. In 1924, Texas Power & Light Company purchased the rights to provide electricity to Grapevine and took over the four miles of lines and 172 homes serviced. Electric power became more consistent and was offered every day, all day, as opposed to just occasionally. Businesses that occupied this structure included D.D. Wall's City Water Works, Lucas Ambulance Service, Tate Furniture, TP&L and the office of Reed Stewart, Tax Assessor.



11

ASHLINS, LTD. 413 & 411 S. MAIN ST.

Originally two stories tall, this building housed businesses including *The Grapevine Sun* newspaper, a feed store and the Grapevine Telephone Exchange. On the night of September 5, 1938, a fire in Cate Feed Store ignited the building and forced the telephone operator to jump from the second floor of the building onto the wood awning below. Firefighters from both Dallas and Fort Worth assisted the Grapevine Volunteer



Fire Department in preserving the downtown business district by responding to the call for help. Damage was so extensive that the tenants permanently vacated the building. Once rebuilt, the building was used for City of Grapevine offices including the library and fire department.



12

D'VINE WINE OF GRAPEVINE 409 & 407 S. MAIN ST.

Burdine's Studio captured memories and special moments on film for families that lived in Grapevine in the 1940s and 1950s. Pictures were first taken in black and white and color was painted in by hand. Robert Stark opened his own shop at this location called City Photo Service. In the 1950s, 407 S. Main St. housed "The Little Shop" which advertised "Infants-Girls-Ladies-Ready to Wear."



13 **THE DESIGNER'S RACK**
405 S. MAIN ST.

A wood-frame structure existed here in the 1930s. It housed C.C. Estill's lumberyard office. Later, a clothes cleaning business called "The Shop" occupied the frame building. By the late 1940s, the current building had been constructed and 405 S. Main St. was subsequently home to two variety stores and The Yum Yum Tree dress shop.



15 **GRAPEVINE'S MARKET ON MAIN**
337 S. MAIN ST.

In 1916, local builder Frank Estill constructed this brick building for John Wood. Built and used primarily for automotive services, it once housed car dealerships. Changes from the early front auto ramps can be seen in the sidewalk and the original tin ceilings remain. A 1927 entry in B.R. Wall's diary mentions a skating rink here. From 1937 until 1992, a Western Auto Store was owned and operated by Jim Wood and later by third generation, Charles Wood.



14 **GRAPEVINE MASONIC LODGE;
THE CORNER STORE**
403 & 401 S. MAIN ST.



This building, built by C.C. Estill at a cost of \$5,780.96, is owned by the Grapevine Masonic Lodge No. 228, A.F. & A.M., which has met at this location since 1916. They have continuously rented the first floor to tenants such as Floyd "Slim" Chambers' City Garage. His business featured an automotive pass-through where the front entry doors are currently located.

16 **TOWN SQUARE GAZEBO**
325 S. MAIN ST.



The Gazebo was built by local merchants as a part of the Texas Main Street Program in 1986 in celebration of the Texas sesquicentennial. For almost 90 years, the site focused on transportation. In the 1890s, horses and carriages were housed in the Wall Brothers Livery Stable. In 1937, after 50 years of service, the stable was torn down and replaced with a Sinclair gas station. Gasoline cost 15¢ per gallon in 1937.

17

SPICE & TEA EXCHANGE; ONE POSH PLACE
319 & 317 S. MAIN ST.



In 1938, E.L. Jordan acquired a General Electric franchise and established an electrical and plumbing business. In 1947, he built this commercial building as a GE appliance showroom. E.L. Jordan also served as a Justice of the Peace when Grapevine was known as the Cantaloupe Capital of the U.S.A. and the city held annual cantaloupe festivals on Main Street (1935 – 1941).



18

NAPOLI'S CONFECTIONERY AND NAPOLI'S ITALIAN CAFE
311 & 309 S. MAIN ST.

The American Legion started this building for their hall after World War II, but they did not complete construction. In the early 1950s, the building was opened as a meeting place for Grapevine residents and organizations. On Friday nights teen couples danced on the concrete floor while big-finned cars of the era "dragged" Main Street.



19

MERRY'S CHRISTMAS AND CLOWNS
309 S. MAIN ST.

The sound of the ringing anvil was last heard along Main Street from this location. The blacksmith shop was owned and operated by C.M. Millican starting in 1909. Later his son, Bill Millican, worked with him until 1959 when they both retired. The shop has been replicated, and blacksmiths again pound iron in the Cotton Belt Railroad District at 701 S. Main St.



20

WALLIS HOTEL
ONE LIBERTY PARK PLAZA

This 1991 building is a replica of the original 1891 Wallis Hotel that was located near the depot at Hudgins and Main Streets. The original hotel served traveling salesmen called "drummers" who "drummed up" or sought business in town. To recreate this new



building, architects used historic photographs to generate exterior plans for the modern building that served as the office of the Grapevine Convention & Visitors Bureau until 2012.

21

THE SIDEWALK JUDGE
WALLIS HOTEL, ONE LIBERTY PARK PLAZA



Not a judge in the legal sense, *The Sidewalk Judge* was known to execute his powers of observation for “sizing up” folks in town. This sculpture was created by J. Seward Johnson Jr. and was dedicated in 1997.



22

WALKING TO TEXAS
LIBERTY PARK PLAZA

Created by Michael Cunningham, *Walking to Texas* was Grapevine’s first piece of public art, dedicated in 1996. This sculpture and fountain is a tribute to the pioneer families who came to the Grape Vine Prairie seeking a bright future and new life.



23

TORIAN CABIN
201 S. MAIN ST.

This cabin, originally built in 1845 northwest of town in the Lonesome Dove community, was occupied by the Torian family from 1886 until the 1940s. In 1976, it was threatened with demolition until the Grapevine Historical Society intervened. Working with City of Grapevine leaders, the logs of the cabin were numbered, disassembled, moved to this site and the cabin was rebuilt. In 1844, this park area was the original commercial center of Grapevine.



24

A WILDERNESS WELCOME
CORNER OF MAIN ST. & NORTHWEST HIGHWAY

Created by Archie St. Claire, this group of statues, dedicated in September 2008, portrays the abundant wildlife which settlers encountered on the Grape Vine Prairie.



25

KOUNTRY DONUTS
102 S. MAIN ST.

This was the site of the Bart H. Starr Friendly Service Station constructed in 1934 with native rock taken from the farm of the owner's father who was also the first mayor of Grapevine. The site of the station was once a part of the Bart Starr, Sr., homestead. Bart Starr, Jr., was a local entrepreneur who was in the drayage business, ran livery stables, and originally sold gasoline from barrels which he strained through chamois skins. This station was in competition with Willhoite's Garage at the south end of Main Street. It was demolished and later replaced with the donut shop.



27

BENJAMIN RICHARD (B.R.) WALL STATUE
CORNER OF WALL ST. & MAIN ST.

The *Benjamin R. Wall* statue is a life-size tribute to Grapevine's fourth mayor. He guided the city through difficult war years with his optimistic view, progressive ideas and charismatic personality. He often wore a rose in his lapel, and a special hole was created in this statue where a rose can be placed. This statue, created by Archie St. Claire, was dedicated in May 2004.



26

REVOLVING CLOSET; LEGACY CAKES; MAIN STREET BARBER SHOP; SU VINO WINERY; TAP-IN GRILL & PUB; OLE GRAPEVINE CIGAR & TOBACCO SHOP
120 S. MAIN ST.

The Bart Starr house was located in this area, a replica of which was constructed at 409 West Wall Street in 1997. The red brick building constructed here in 1997 was done in cooperation with the Historic Preservation Commission to create a new building that would complement Grapevine's historic Main Street.



28

GRAPEVINE CITY HALL
200 S. MAIN ST.



This 1997 building incorporates architectural elements from Grapevine's past. The columns in the front of the building are replicated from the old Farmers National Bank which was located near the corner of Main and Worth Streets. The arched brick work is a replica of Willhoite's Warehouse, formerly the Grapevine Free School, a local public school, which was located near the train depot. The 14 stars on the front of the building represent the Grapevine City Council and the Planning and Zoning Commission members.

29

THE GRAPEVINE NIGHTWATCHMAN ATOP CITY HALL

Keeping vigil high over Main Street that he once guarded on foot, *The Grapevine Nightwatchman* with his lantern honors the men who served the city from 1907 until 1956. Before Grapevine had a police department, the Nightwatchman patrolled the center of town at night to check that the stores were locked, served as the dog catcher and checked the city water wells on Main Street. As if to match the grandeur of memories of him, the statue is eight feet tall and weighs 640 pounds. Created by Jack Bryant, it was dedicated in 1998.



30
b

LANCASTER THEATRE 308 S. MAIN ST.

Lipscomb-Weatherly Co., a mercantile store, was originally located in this building. The building was renovated in the 1930s with a then-modern, Spanish stucco Mediterranean design to give local entrepreneur, Kirby Buckner, a unique building on Main Street. After Buckner sold the building, the south portion of the building became Yates Dry Goods. Brick arches that supported the ceiling can still be seen inside. Burrus Super Market occupied the northern section.



30
a

PALACE THEATRE 300 S. MAIN ST.



This site is the third location on Main Street for the Palace Theatre. At the opening show here in 1940, "My Love Came Back," seats cost 10¢ for adults and 5¢ for children. The Palace became a central place in Grapevine for people to gather. Children came on Saturday afternoons for double-feature shows. Teens brought their dates on Saturday nights to sit close in the love-seats. Drawings for cash

prizes were held on Tuesday evenings. Families enjoyed shows on Sunday afternoons at 3 p.m. It was a fine facility for a little town on the Grape Vine Prairie. In the 1970s, the Palace became a venue for live country music shows. In May 2001, after an extensive renovation, the restored and updated theatre was re-opened by the Grapevine Heritage Foundation. The theatre, with its balcony, features 427 seats. Willie Nelson, LeAnn Rimes, Brenda Lee, Porter Wagoner, Bruce Channel and other stars have performed here.

30
c

PALACE ARTS CENTER 300 S. MAIN ST. (INCLUDING 302, 308, AND 310 S. MAIN ST.)

Comprised of the Lancaster Theatre and the Palace Theatre, this complex was the site of the Buckner Cash Grocery and Buckner Dry Goods store in the 1930s. The two Buckner stores were converted into the Lancaster Theatre which opened in 2001. It is a black box theater used for plays, musicals, meetings and dinner rentals. Kirby Buckner built the Palace Theatre on the north side of his building in 1940 at a cost of \$25,000. The Grapevine Opry acquired the old movie theatre in 1974 and used it for their country western shows. The site was threatened with closure in 1991, but the Grapevine Heritage Foundation stepped in and saved the building. The Palace Theatre hosts monthly movies and concerts. The Grapevine Opry is still a popular, regular show at the Palace Theatre.



31

TIM HOGAN'S CARPETS & FLOORS; BEADS ON THE VINE

312 & 314 S. MAIN ST.



In an effort to "modernize" Main Street in the 1960s and 1970s, many merchants placed metal siding or "slipcovers" on their buildings. At this location, the original brick was removed and only the raw surface exists under the metal. This building's metal slipcover is one of the last

remnants of this "modern" fad. Millican's Café, established in 1931 by Clarence Millican at 314 S. Main, was the meeting place for the Grapevine Lions Club, chartered in 1934. Café patrons said Nellie Millican's homemade pies were delicious. Luther "Moon" Cate's Grocery occupied the building in the 1940s and early 1950s. The original site of the Palace Theatre in the 1920s was 312 S. Main St. Later, Buckner's Hardware and several variety stores were located here.



32

MAIN STREET BISTRO & BAKERY

316 S. MAIN ST.

Built in 1888, this was originally the site of the Withrow Brothers Harness Shop. In 1946, the building was described as being "dilapidated." The new owners, L.W. Parker and his father, Luther, completely remodeled and restored it. They sold appliances and furniture. A seven-inch television cost \$365 in the late 1940s.



33

MAIN STREET BISTRO & BAKERY

318 S. MAIN ST.

From 1917 to 1925, this was the site of Hilbish Variety store. J.E. Foust & Co. used this building for casket displays and embalming from the late 1920s through the mid-1940s. When their store at 334 S. Main St. closed in 1963, the Foust family moved their appliance and furniture business to this location.



34

MESSINA'S SHOE AND BOOT REPAIR

320 S. MAIN ST.

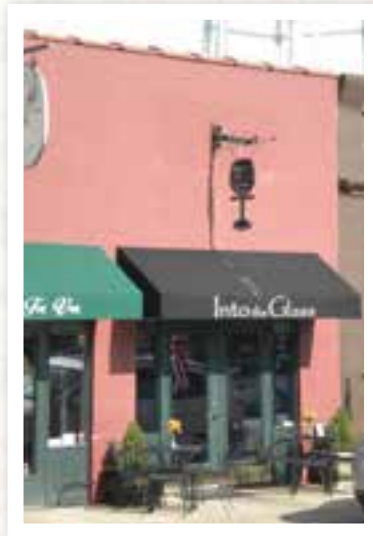


This building, constructed in 1888, was the site of Wall Drug Store. In 1917, the store was sold to John and Mamie Spinks and later to Angus McNutt who operated a Rexall Drug Store. This was the site of Mayor William D. Tate's first law office. Mayor Tate is the longest serving mayor in Grapevine history, serving more than 30 years. Sam Messina's unique, historic hanging shoe sign was constructed in 1947 and has been in Grapevine since 1977.

35

**INTO THE GLASS WINE BAR
AND TEXAS CAFE**
322 S. MAIN ST.

The addresses 324 and 322 S. Main St. were once a single building and believed to be the location of Judge J. T. Morehead's office. In 1854, Judge Morehead recommended naming the town "Grape Vine" after the wild mustang grapes that grew abundantly on the prairie. This building has been the site of many restaurants including Mrs. Strain's Good Eats Café where dinner could be had in the 1930s for 35 cents, and several jewelry and watch repair shops.



37

WILLOW COTTAGE
326 S. MAIN ST.

This building was constructed in 1898. It originally housed two stores including a general store operated by brothers Wingate and Dave Lucas. They sold groceries, farm implements, furniture and coffins. The funeral business has been a Lucas family enterprise since the 1860s. Both brothers died in 1910, but another brother, J.T. Lucas, Sr., acquired it and continued the family business at 412 S. Main St. Descendants of the Lucas family are still in the funeral business.



36

OFF THE VINE
324 S. MAIN ST.

Two Charlies, father and son, worked together in the 1940s and 1950s in this building. Each Charlie had a different trade. Charles, Jr., repaired watches in the back while Charles, Sr., cut hair in the front. One of several shoe shine stands on Main Street was located in this building. The shoe shine man was Frank "Babe" Lanford who later became Grapevine's Justice of the Peace.



38

IOOF BUILDING; PALOMA BOUTIQUE
330 S. MAIN ST.

This two-story building, built in 1888, was purchased by the Independent Order of Odd Fellows (IOOF) Lodge No. 402 which was instituted in Grapevine in 1895. The IOOF still calls the second floor home. The Grapevine Telephone Exchange, chartered by J. E. Foust in 1905, occupied the lobby of the second floor until 1912. The first floor was D. D. Wall's City Restaurant and Meat Market from 1911 to 1927.



39

GREAT AMERICAN WEST GALLERY

332 S. MAIN ST.



The Tarrant County State Bank was opened at 336 S. Main St. in 1919. It moved to this location in 1921. The Tarrant County State Bank became a national bank in 1925. In 1942, it changed its name to First National Bank of Grapevine just before moving to a newly-constructed building at 342 South Main St. *The Grapevine Sun* newspaper, founded in 1895 then purchased by the Keeling family and operated by them for 80 years, occupied this building from 1947 until 2009. Beautifully restored, the building is now home of Great American West Gallery.



40

GOOD THINGS FOR ALL SEASONS

334 S. MAIN ST.

The J. E. Foust & Co. general store sold groceries and funeral supplies. The building was built in 1888, the same year the St. Louis Southwestern Railway (known as the Cotton Belt Route) arrived in Grapevine. The funeral business moved to 523 S. Main St. in 1945; the grocery continued in this location until 1963. This building, with a corrugated iron canopy seen in historic photographs, was completely restored in 1993.

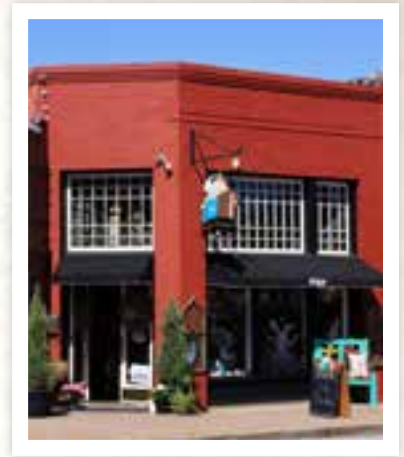


41

HOLY GROUNDS

336 S. MAIN ST.

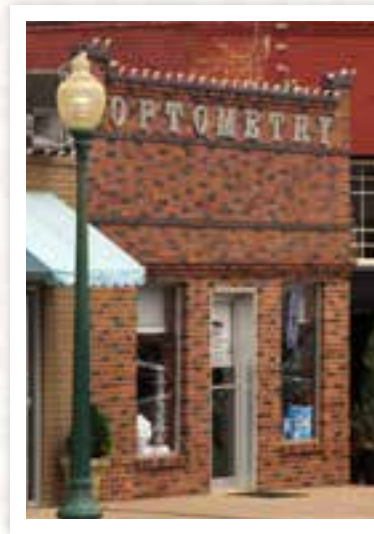
Holy Grounds still uses the original Farmers National Bank vault inside this building. The building was also the site of long-time Mayor B. R. Wall's law office. Here he kept the Pitcairn Island collection box. Read the marker near the statue of B. R. Wall at the corner of Wall St. and Main St. for the full story.



42

EYE HEALTH ASSOCIATES, P.A.

338 S. MAIN ST.



Lon Carloye's Café, known by straight-laced matrons as a "honky tonk" because of its jukebox, was located here in the late 1930s and 1940s. Two dress shops were opened here prior to the opening of Dr. Ira E. Woods' optometry practice in 1956. Dr. Woods served as mayor of Grapevine from 1963 until his death in 1969.

43

GRAPEVINE OLIVE OIL COMPANY
340 S. MAIN ST.

An 1899 photograph of one of the town's earliest Main Street parades captured the image of a photography wagon located here. Later the Farmers National Bank and the Palace Theatre occupied this site. This building was constructed at a later time and for many years housed Neva Byrd's Barber Shop.



45

BERMUDA GOLD & SILVER
404 S. MAIN ST.



In 1900, R.E. "Bob" Morrow and others organized the Grapevine National Bank. Morrow closed that bank at the end of 1918 and then established Grapevine Home Bank. In 1932, two friends of Clyde Barrow and Bonnie Parker held up the bank at gunpoint and locked the bank officials in the vault. The robbers escaped to the countryside south of town with the money. Grapevine Justice of the Peace E.L. Jordan

and two local merchants, Ed Davis and Gordon Tate, caught one robber with the money the same day. With the advent of banking regulations the following year, the bank went into voluntary liquidation on October 31, 1933, and each depositor was paid in full.

44

DINO'S STEAK & CLAW HOUSE
342 S. MAIN ST.

This was the site of Yates Dry Goods Store and of the beautiful 1910 Farmers National Bank building. In 1942, a new international-style First National Bank of Grapevine building was constructed under the direction of bank president D. E. Box and world-

renowned architect, Walter W. Ahlschlager. Ahlschlager also designed the Roxy Theatre in New York City and the Peabody Hotel in Memphis.



46

TEXAS BELLES & BEAUS
406 S. MAIN ST.

The Olympia Confectionary was owned by C.S. & Frank Rainwater. Silent films were shown here in early days. C.E. "Pie" Stewart bought the confectionary in 1914. He added a soda fountain, and teenagers met here for ice cream and cokes. Barbershop quartets occasionally entertained the patrons. In the late 1940s, it became City Drug, owned by Roy Chambers. The drugstore continued to attract the after-school crowd for sodas in the "happy days" of the 1950s.



47

OOH LA LA!
408 S. MAIN ST.



This building was built in 1890 on land owned by the family of early pioneer E.M. Jenkins. From 1944 to 1995, the building was owned by the Gordon Tate family. It served as the post office from 1945 to 1960; later it housed Louise's Variety, a florist shop and a tailor shop owned by Louise Tate. At the back door of Louise's Variety, the Continental Trailways bus stop provided the opportunity for people to ride to Fort Worth where they could make a connection to travel anywhere in the United States.



48

CHIC BOUTIQUE
412 S. MAIN ST.

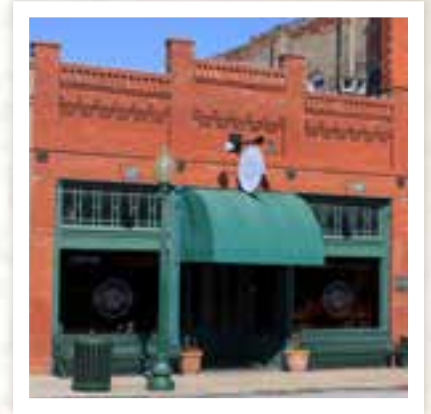
The original stained glass still remains in the transoms of this circa 1900 store. The second story, 410 S. Main, was added as a funeral parlor in 1911. One hot summer in the 1910s, Bob Lucas, son and family accountant, moved his desk from inside the building to the front sidewalk "for a cool spot" rather than sitting in the store where the ceiling fans only "stirred the hot air." Only two Main Street buildings, the Palace Theatre and First National Bank, had air conditioning in the 1940s. Cooled air was not consistent in Main Street businesses until the 1970s when buildings were updated.



49

BIG FISH SEAFOOD GRILL & BAR
414 S. MAIN ST.

With its three bays divided by two square cast iron columns and pilasters, this is a good example of an early 20th century small town commercial building. In 1909, "and Son" was added to the store's name when E.J. Lipscomb's son, Huber, began to work with him. Among the items sold here were fabric, thread, shoes and various items of clothing. The Lipscombs hired several ladies in the community to work in the store. In 1933, Huber married Ruby, one of their clerks, and they ran the store together until 1967.



50

ANTIQURE REVIVAL
418 S. MAIN ST.

Home to grocery and hardware stores since its construction circa 1900, this building's symmetrical façade was the backdrop for merchandise such as Christmas trees displayed on handmade stands. Men entered across the imprinted cast iron threshold to sit inside on cane-bottom chairs and talk about crops, investments and local news. This building was one of the first to be restored in the 1980s. Time-worn bricks were removed, cleaned and reversed to bring back the building's original appearance.



51

FARINA'S WINERY & CAFE
420 S. MAIN ST.

This imposing building features cast iron columns with fluting and floral capitals and a cast iron threshold that still bears the name of the first tenant, Koonce Brothers. Their newspaper ad read "Dealers in Hardware, Queensware (dishes), Country Produce, Buggies, Wagons, Farming Implements, Furniture and Undertaker's Supplies." Bricks used in the building's construction were made at a local kiln owned by Jake Waymire and have stood the test of time.



52

THE MAGIC PEN; ADORN BY AMANDA
422 S. MAIN ST.



The northern portion of this three-part building was a grocery store in the early 1930s. At that time in Grapevine's history, grocery stores were numerous on Main Street. Mrs. Sarah Carney operated a beauty shop here in the late 1930s and early 1940s. Along with her beauty shop, a section was set aside as a barbershop where her husband cut hair. At that time it was not customary for a woman to cut a man's hair.

53

THE EDGE APPAREL
424 S. MAIN ST.

In the 1910s through the 1930s, Austin's Drug Store located here was the place where residents could catch a ride in a "jitney" (a privately owned touring car) to Fort Worth. Schedules were set and passengers met in front of the store at the "jitney stand." D. E. Austin's drugstore was located in the front of the building, and the rear part housed Dr. E. C. Bechtol's office. He was an early community physician who made house calls in his horse-drawn buggy.



54

THE EDGE APPAREL
426 S. MAIN ST.

Built in 1910 by A.V. Mabry, the south portion of this three-part building was for many years the location of the Grapevine Post Office. This building replaced the prior post office that was housed in a frame building constructed in 1889. Cost of postage in 1910 for domestic letters was 2¢ per ounce and 1¢ for postcards. The foreign rate was 5¢



per ounce. Residents came to the post office to pick up their mail until the mid-1950s when the streets in Grapevine were numbered and house-to-house delivery option began.

55

CITY FLORIST
430 S. MAIN ST.



Rainwater Blacksmith shop and a restaurant once stood at this location. A "W" at the top of the current building stands for Ted Willhoite who built the building in 1946 to house his expanding Goodyear business. He also sold bicycles, toys, appliances, Christmas decorations and the annual Goodyear Christmas record album.

The limestone shell veneer on the front of the building came from the Texas Hill Country and was cut by Willhoite. This type of limestone can no longer be quarried.



56

WILLHOITE'S RESTAURANT
432 S. MAIN ST.

Built in 1913 as a two-story mercantile business, this store also housed a theater in its early days. The theater, managed by J.W. Taylor, showed silent movies. In 1921, A.W. Willhoite and Bart Starr, Jr., opened Grapevine's first one-stop auto service station here, and in 1936, A.W.'s son, Ted Willhoite, installed the first electric gas pumps and hydraulic auto-lift. A small office was provided in the building for the Grapevine Nightwatchman, the only law enforcement official in town until 1956. Ted ran the service station until 1975. Restaurant owner Phil Parker purchased the building and kept the Willhoite name because of its local familiarity and excellent reputation.



57

THE GRAPEVINE CALABOOSE
500 S. MAIN ST.

The Grapevine Calaboose got its name from the Spanish word, "calabozo," meaning dungeon. Its construction was authorized by the Grapevine City Council in 1909 and was built as the town's first jail in 1914. Originally located on Barton Street, it was used to incarcerate petty criminals (mostly just for overnight stays) until the early 1950s. It was moved in 1976 to Heritage Park and brought to this site in 1994.



58

7-ELEVEN MARKET; JAKES HAMBURGERS; LONE STAR STITCHING EMBROIDERY & SILK SCREEN; COWHEADS RELICS OF THE WEST; HIPPOP; DEBORAH'S CUSTOM TOE RINGS; KARMA HANDICRAFTS
520 S. MAIN ST.



This building was originally constructed in 1966 for Parker Furniture and Appliance which was serving the growing town. An addition to the south of the building was constructed in 1975, with extensive remodeling taking place in 1998 and 2012.



59

VIGNETTES CUSTOM INTERIORS
530 S. MAIN ST.

Built in 1929 and owned by Oscar Thomas, this building is a great example of an early service station design. The unique wood trim on the canopy has been restored and the building prepared for use as another type of business.

The original construction of this Gulf station coincided with the construction of old Hwy. 121, which connected Grapevine to downtown Fort Worth. Fred "Abie" Statum operated the station from the 1930s into the 1960s.



60

BLAGG TIRE & SERVICE; TUXEDO JUNCTION

604 S. MAIN ST. AND 616 S. MAIN ST.



A white bungalow house was situated at this corner location and was the home of the Maxwell and Loges families over time. A barbeque pit and fruit stand owned by 'Tater' Tucker operated in the 1950s where Tuxedo Junction is located today.



61

GRAPEVINE CONVENTION & VISITORS BUREAU HEADQUARTERS AND MUSEUM COMPLEX

636 S. MAIN ST.

This creatively designed new building on Main Street which opened in 2012 is the home of the Grapevine Convention & Visitors Bureau, the Visitor Information Center, museum exhibits and galleries. Here visitors can start a walking tour, learn about Grapevine's world class hotels, great attractions, restaurants and historic charm that make Grapevine a conference and vacation destination for over 19 million visitors each year. Visit www.GrapevineTexasUSA.com to see a complete schedule of events and learn what is happening in Grapevine today and in the future.



62

MASTER MADE FEED STORE

702 S. MAIN ST.



W.D. "Bill" Deacon and sons, Floyd and Earl, built Master Made Feed Store in the mid-1950s. C.T. "Mickey" Watters and his son Mitch began to lease the store in 1970. Today, they sell a variety of animal feed as well as farm and ranch supplies. Both the mill and the feed store are reminders of the days when the small town of Grapevine

was primarily an agricultural center surrounded by vast fields of corn, wheat and cotton.



63

B&D MILLS

702 S. MAIN ST.



A flour mill, constructed here in 1902, was bought by Kirby Buckner and W.D. "Bill" Deacon in 1933. They converted it to a feed manufacturing complex. Edna and Bill Deacon raised poultry first at their farm and later in the back room hatcheries of their two feed stores on Main Street.

A special feed mix was made for the pullets by the Deacons, and the poultry did so well that people not only wanted to buy the chicks but also their feed. The business continued to expand, and the manufacturing tower containing Texas' first electronic feed mixing system was erected on this site in 1950. The unique single-row concrete bulk warehouse represents a "rare building" according to the National Park Service and is listed in the National Register of Historic Places.

WALKING TRAIL MAP

DEDICATED TO THE MEMORY OF OUR DEAR FRIEND AND TEACHER SANDRA KAY TATE (1938 – 2011)

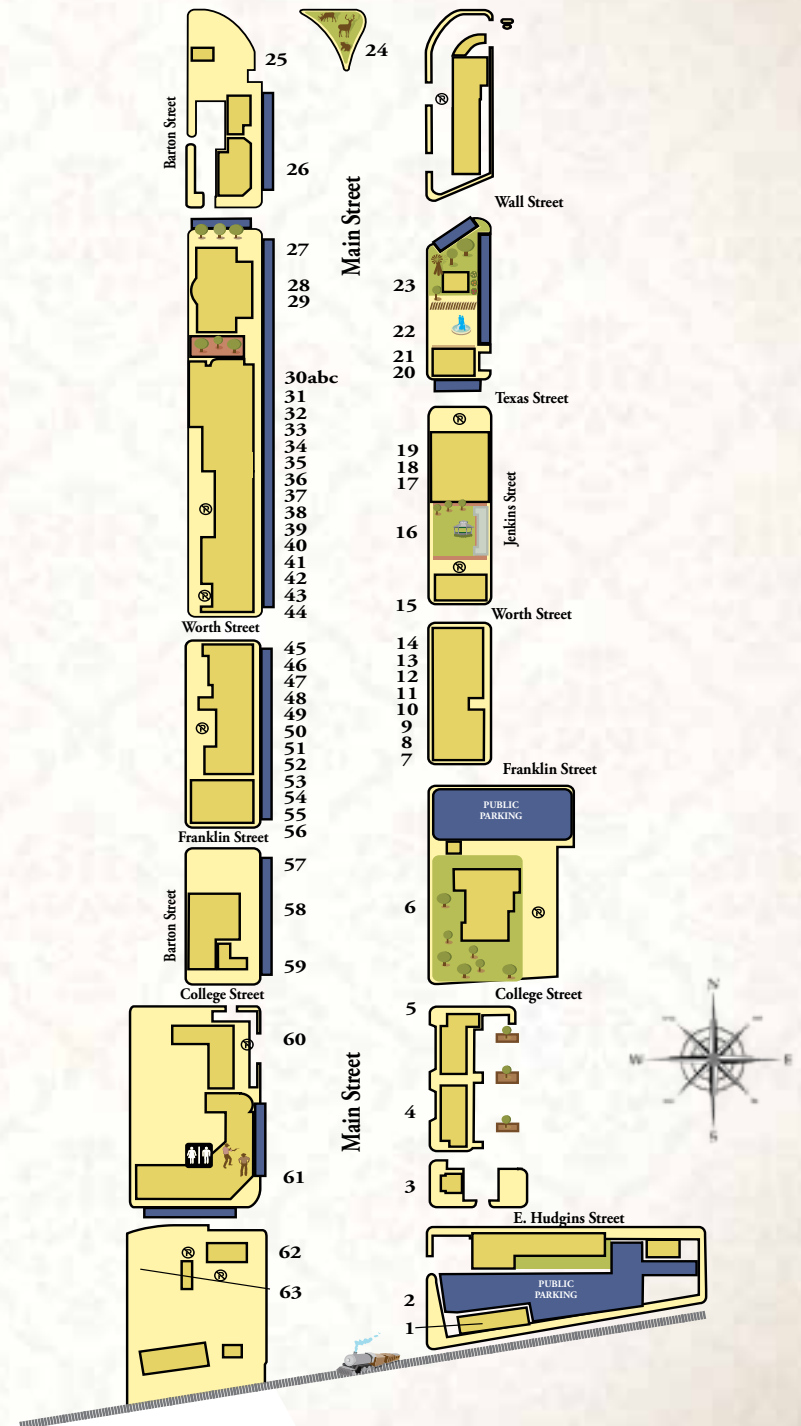


Sandra Kay Tate was born in 1938, the first child born to Gordon Douglas Tate and Annie Louise Bennett Tate. She graduated from Grapevine High School in 1957 and received a B.S. Degree in Elementary Education from North Texas State College, now the University of North Texas. Sandra taught school in Midland, Spring Branch and Carroll Independent School Districts, and resided with her mother in Grapevine most of her adult life. She was the sister of long-time Grapevine Mayor William D. Tate, and the beloved aunt to five girls and to numerous great nieces and nephews and cousins. After Sandra retired from teaching, she became a volunteer in the Grapevine Visitor Information Center and Grapevine Historical Museum.

Sandra served as the book coordinator and champion of the Grapevine Historical Society's 624-page publication, Grapevine's Most Unforgettable Characters. The five-year project which began in 2001 preserves the photographs and stories of the people who influenced Grapevine's development and its heritage. Upon the completion of the book, Sandra felt compelled to fully document the history of the Main Street business district that was so important in her life. Her grandfather, father and mother had been Main Street merchants, and she had a strong interest in the stores and the people who ran them in her hometown. She had a vivid and detailed memory of the stores' interiors, the merchandise and the equipment that they held. To verify her memories and confirm addresses she would slowly drive along Main Street, especially on Sunday mornings. She collected stories and verified facts for each address and asked many life-long friends for input. Without the diligent effort of Sandra Kay Tate, this historic walking tour booklet would not have been written and important Grapevine facts would have been lost.

SPECIAL THANKS:

Sallie Andrews, Rebeka Cook, Judy Jacobs and Margaret Wood who worked with Sandra Tate on the content of this brochure. Thanks to Mardita Murphy for photographing the buildings.





GRAPEVINE CONVENTION & VISITORS BUREAU
636 S. MAIN ST
GRAPEVINE, TEXAS 76051