

# Take the «A» Train

Tuba E $\flat$  B.C.

Billy Strayhorn

Arr: Idar Torskangerpoll

**Swing** ♩=152

3

---

$$f$$

13

 $mf$  $mf$ 

21

29

$$f$$

37

 $mf$ 

51

$$\mathcal{F}$$
 $mf$ 

59

67



75



83



*f*



87



*ff*

*mf*

95



*ff*

103



*mf*



111



*f*

119

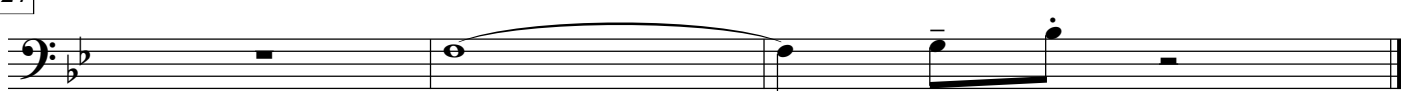


*mf*



*f*

127



*ff*