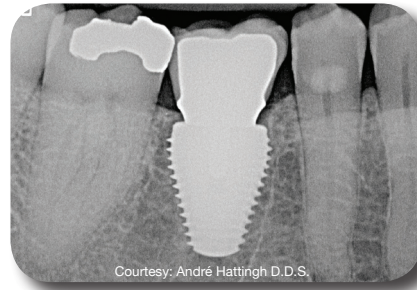


# MAX Dental Implants

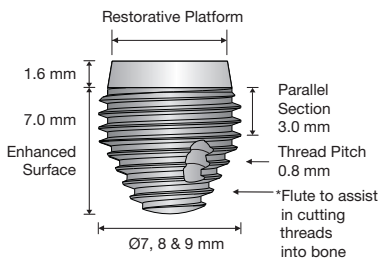
## SURGICAL AND PROSTHETIC KEY BENEFITS

- Immediate placement in a molar extraction socket
- Maintains the natural architecture of the site and maximizes bone preservation
- Restoration 4-months or less after placement
- Proven thread pattern allows for superior primary stability
- Industry compatible connections
- Allows for platform switching



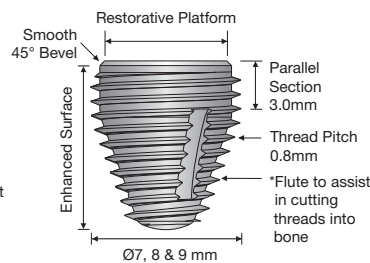
## Immediate Implant Placement in a Molar Socket

### Tri-MAX



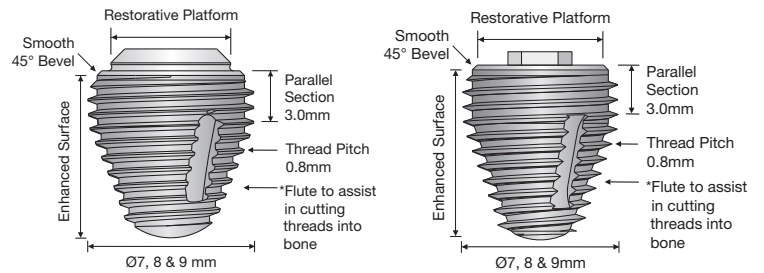
Internal Tri-Lobe

### MAX-IT



Internal Tri-Lobe

### MAX



Internal Octagon/Morse Taper



External Hexagon

**Tri-MAX:**

DIAMETER	LENGTH	PLATFORM
7.0 mm	7.0 mm	Ø5.0 mm
7.0 mm	9.0 mm	Ø5.0 mm
7.0 mm	11.0 mm	Ø5.0 mm
8.0 mm	7.0 mm	Ø6.0 mm
8.0 mm	9.0 mm	Ø6.0 mm
8.0 mm	11.0 mm	Ø6.0 mm
9.0 mm	7.0 mm	Ø6.0 mm
9.0 mm	9.0 mm	Ø6.0 mm
9.0 mm	11.0 mm	Ø6.0 mm

**Tri-MAX:**

DIAMETER	LENGTH	PLATFORM
7.0 mm	7.0 mm	Ø5.0 mm
7.0 mm	9.0 mm	Ø5.0 mm
7.0 mm	11.0 mm	Ø5.0 mm
8.0 mm	7.0 mm	Ø6.0 mm
8.0 mm	9.0 mm	Ø6.0 mm
8.0 mm	11.0 mm	Ø6.0 mm
9.0 mm	7.0 mm	Ø6.0 mm
9.0 mm	9.0 mm	Ø6.0 mm
9.0 mm	11.0 mm	Ø6.0 mm

**MAX-IT:**

DIAMETER	LENGTH	PLATFORM
7.0 mm	7.0 mm	Ø4.8 mm
7.0 mm	9.0 mm	Ø4.8 mm
7.0 mm	11.0 mm	Ø4.8 mm
8.0 mm	7.0 mm	Ø6.5 mm
8.0 mm	9.0 mm	Ø6.5 mm
8.0 mm	11.0 mm	Ø6.5 mm
9.0 mm	7.0 mm	Ø6.5 mm
9.0 mm	9.0 mm	Ø6.5 mm
9.0 mm	11.0 mm	Ø6.5 mm

**MAX:**

DIAMETER	LENGTH	PLATFORM
7.0 mm	7.0 mm	Ø5.0 mm
7.0 mm	9.0 mm	Ø5.0 mm
7.0 mm	11.0 mm	Ø5.0 mm
8.0 mm	7.0 mm	Ø6.0 mm
8.0 mm	9.0 mm	Ø6.0 mm
8.0 mm	11.0 mm	Ø6.0 mm
9.0 mm	7.0 mm	Ø7.0 mm
9.0 mm	9.0 mm	Ø7.0 mm
9.0 mm	11.0 mm	Ø7.0 mm

The Tri-MAX implant of 7.0 mm lengths features a 1.6 mm smooth collar to accommodate the internal connection.

\*Note: No flute in last two threads to protect sinus



5 Holland Building 209 Irvine, CA 92618

Toll Free 866 700-2100 Tel 949 273-8505 Fax 949 273-8508

www.southernimplants.us

©2012 Southern Implants Inc. All rights reserved. SIM-12-16MX